

Operating trays's completeness monitoring during sterilization process



Schuhler E.¹, Lakhmi C.², Charlet G.³, Stolz K.⁴, Abdaoui A.⁵, Duployez A.⁶, Denis C.

Sterinord Central Steril supply Department, CHRU Lille, FRANCE

Introduction / Objectives

In order to ensure an effective instrument tracking procedure, an instrument tracking software (Advance Ste®) is used at two process steps: pre-assembly in operating rooms and assembly in CSSD
 This study is carried out in order to determine root causes of errors or losses that still occur despite this procedure.

Method

The current study takes place from December 2015 to June 2016.
 Tray's composition are compared manually or thanks to IT system at three steps:



Results

Observed trays:

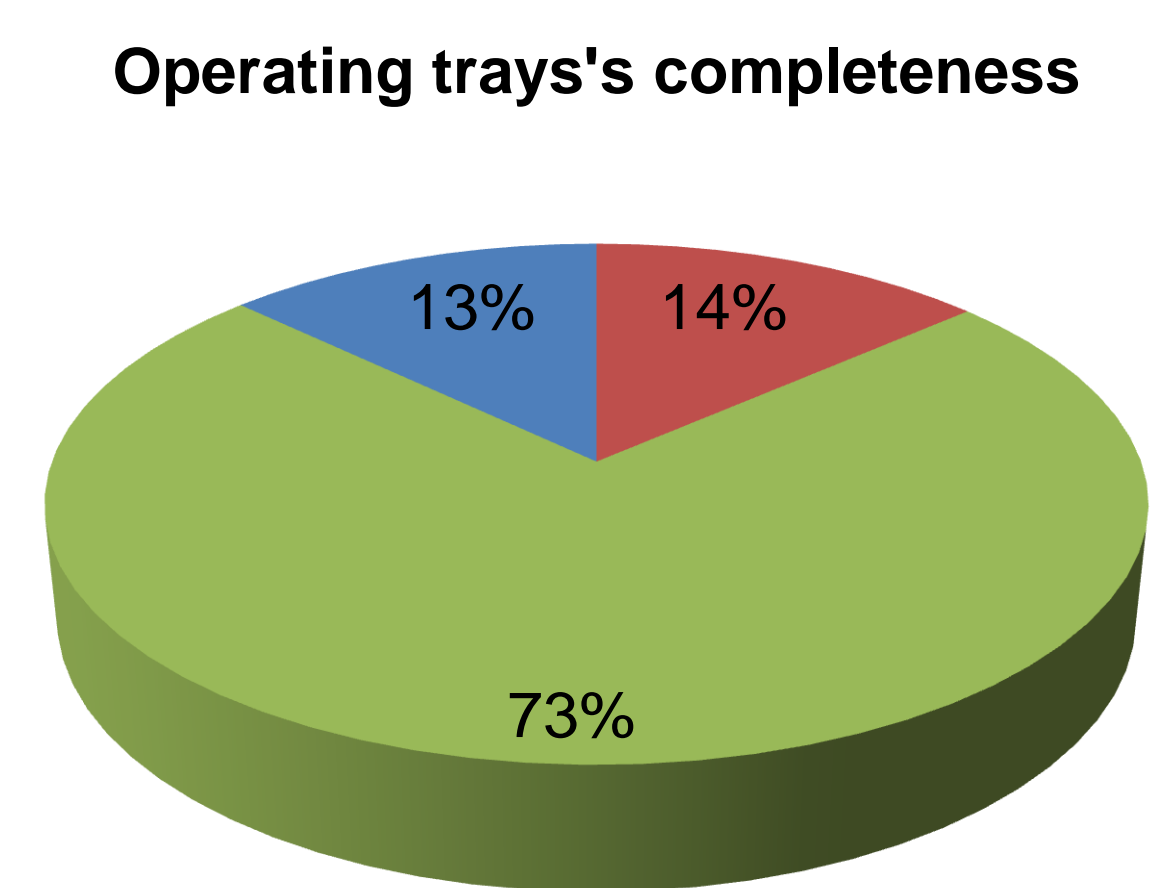
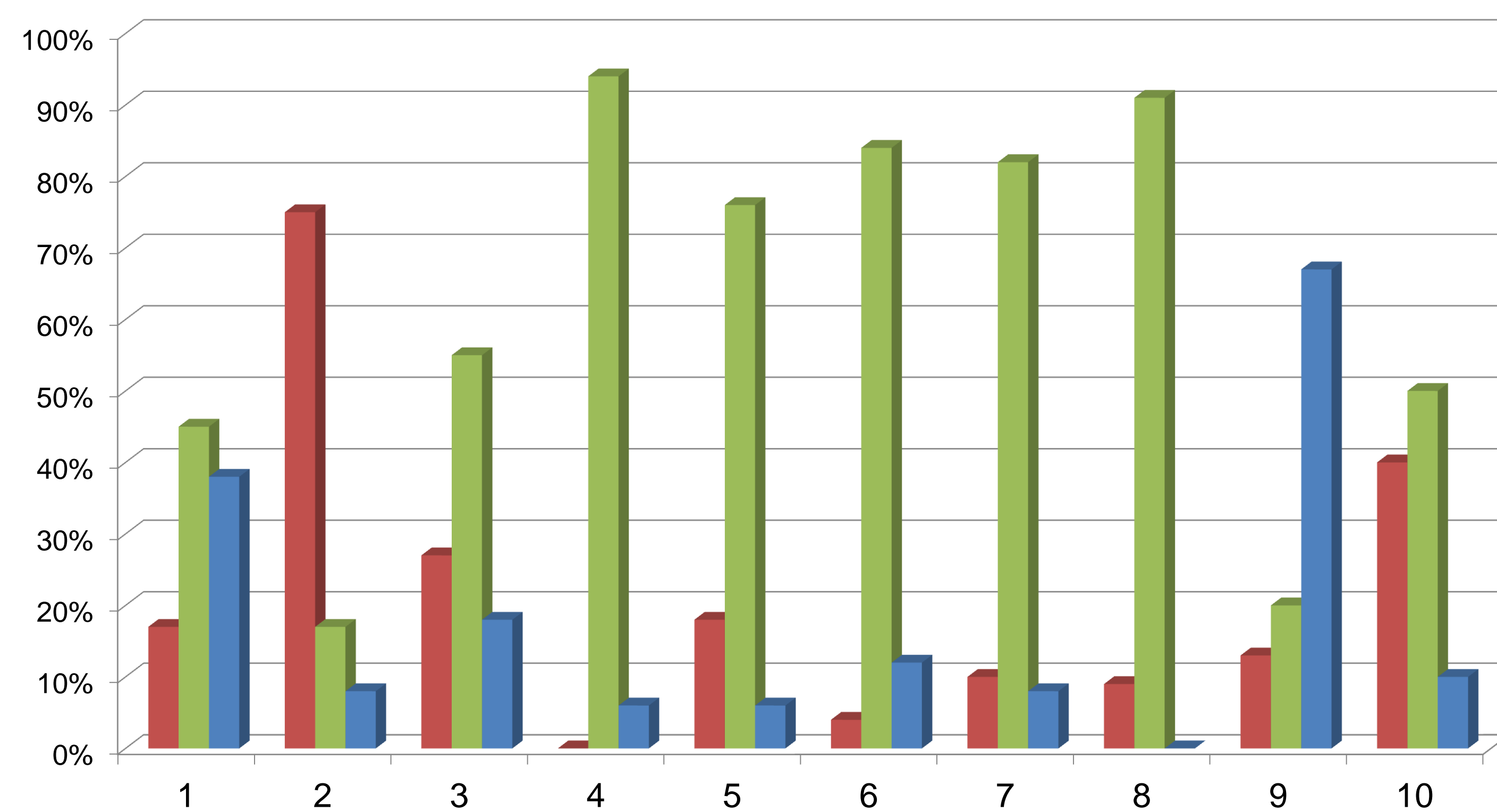
Surgical Department	EAR THROAT NOSE SURGERY			TRAUMATOLOGY ORTHOPAEDICS				THORACIC SURGERY		
	Trays number	1	2	3	4	5	6	7	8	9
Trays	Ethmoid endonasal	Nose	Tympano-plasty	Engine Power pro	Hands soft tissues	Soft tissues	Total hip prothese	Total hip prothese bis	Base	Thorax
Observed trays	29	12	11	52	33	45	39	23	8	10

**No losses of instruments between reception step and assembly step in CSSD are observed.
 Three types of trays are observed:**

Trays well pre-assembled :
 similar compositions at pre assembly, reception, and assembly steps and no errors in the instrument tracking software

Trays not pre-assembled at all requiring a real composition's correction at assembly step

Trays with only tracking errors at pre-assembly step:
 differences between the tray's content and instrument tracking software are noticed



Discussion

This study highlights the misuse of the instrument tracking software at pre-assembly step

- ➔ **Currently there is no obligation to scan the instruments at pre-assembly step so the surgical team does not scan systematically them.**
- ➔ **Tracking errors at pre-assembly step are probably due to the lack of training of operators.**

Conclusion

- Different measures will be taken to improve the instrument tracking :
- ➔ **The instrument compulsory scan at pre-assembly step to make the most of the tracking system. It must be integrated into the procedure.**
 - ➔ **The operators in operating rooms should receive an appropriate training related to the instrument tracking software to reduce tracking errors at pre-assembly step.**

We hope these actions will show results. A similar study will be made to ensure this.